

*add new tech to your business!*

# **ADDAX IMS STRUCTURE**



## **ADD GRUP: Short Summary**

ADD GRUP has been founded in 1992. Since 1998 the company deals with development, production, implementation and technical support of Advanced Metering Infrastructure (AMI) Systems based on LV and MV PLC data communication. During this period a series of AMI-projects have been successfully implemented worldwide in:

Sweden  
Estonia  
Czech Republic  
Bulgaria  
Russia  
Ukraine  
Indonesia  
United Arab Emirates  
South Africa  
Egypt  
Brazil  
New Zealand  
etc.

ADD GRUP implementation map



*add new tech to your business!*

## **ADD GRUP: Short Summary**

The production is certified according to ISO 9001:2000 Quality Management System.



Today 300 people within ADD GRUP contribute to the creation of ADDAX AMI Systems. 90 persons deal with R&D activities, and 210 are involved in the production.



*add new tech to your business!*

## What is ADDAX IMS?

**ADDAX Integrated Metering System (ADDAX IMS)** is a modern automated system designed for remote metering and management of different resources consumption.

Meters designed for different resources can be integrated into the system, thereby, ADDAX IMS can perform metering of several kinds of resources simultaneously:

**Electricity**



**Water**



**Gas**



**Heating**



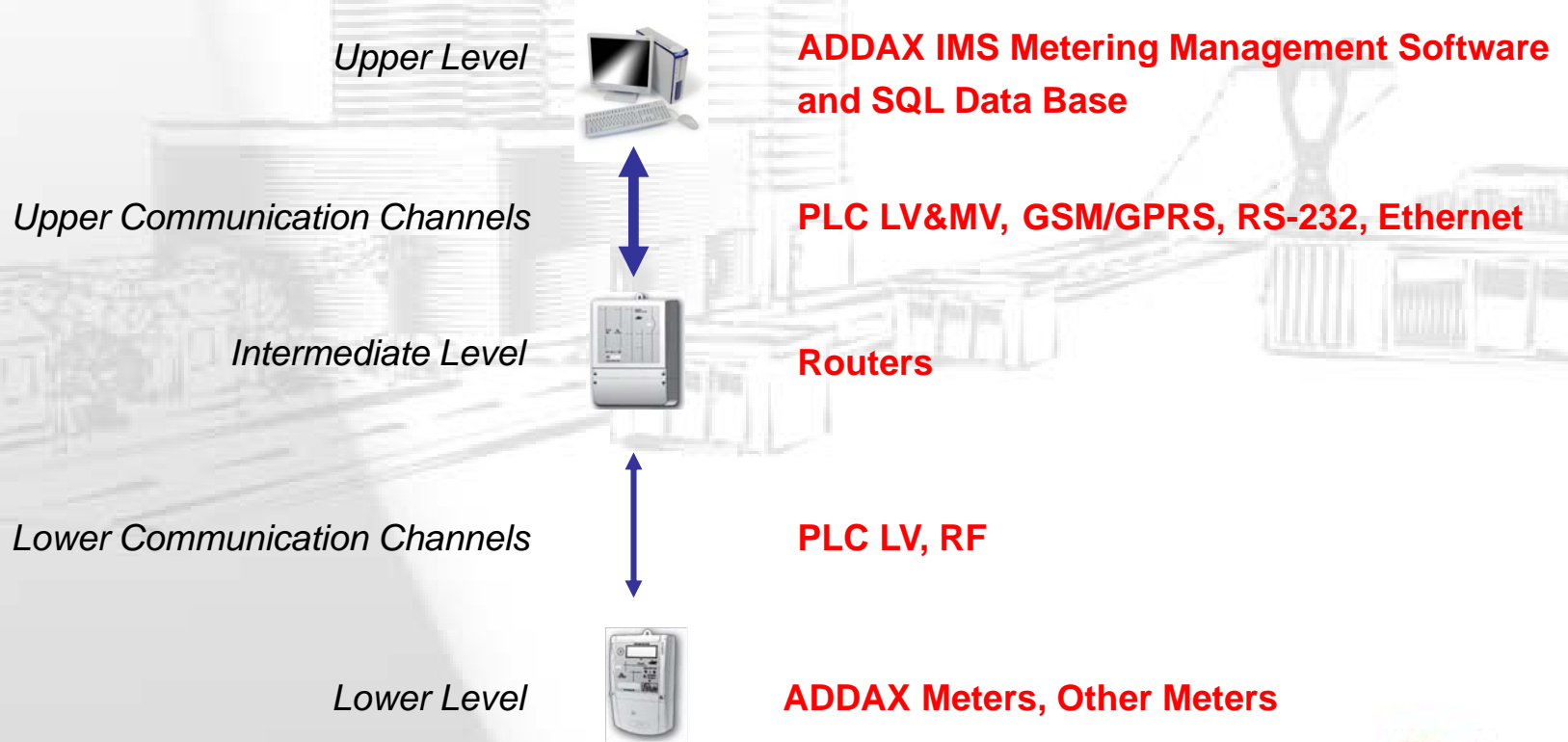
**Street Lighting**



*add new tech to your business!*

## General presentation of the system

**Smart IMS has 3-level architecture:**



*add new tech to your business!*

## Lower level

Terminal devices (meters) - are installed directly at metering points: ADDAX meters, meters produced by other manufacturers, supporting interfaces applied in the System.

Key features of ADDAX Electricity Meters:



**Support of DLMS/COSEM**

**Full two-way communication via LV & MV Power Lines**

**Credit and Prepayment (STS) operation modes**

**Multi-tariff**



*add new tech to your business!*

## Middle level

ADDAX Routers are special communication device, used to build full scale distributed data transmission network – ADDAX.Net. Routers provide communication both through open (public) and specific physical environments, typical for AMR/AMI:

- Ethernet
- GSM (GPRS)
- MV Power Line
- LV Power Line
- Local RF
- Wire (CM.Bus)



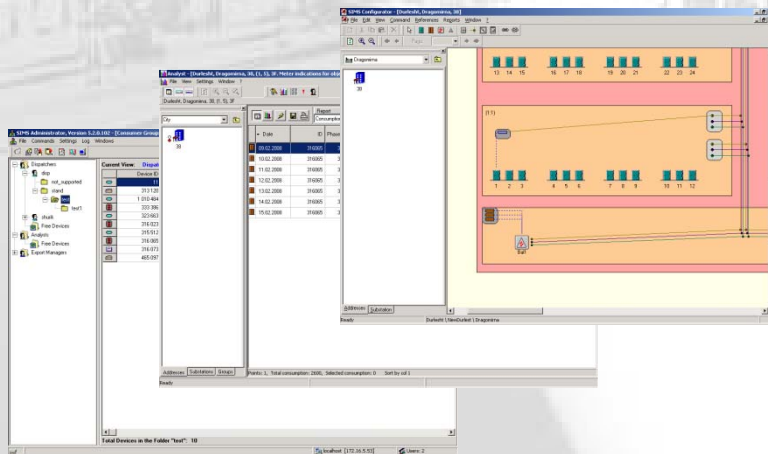
add new tech to your business!

## Upper level

### Data Collection and Processing Center

*The Center software includes:*

- MS Windows 2000 SP4 / XP SP2 / 2003 Server SP1
- MS SQL Server 2005 Express Edition
- MS Office 2000 / 2003+
- ADDAX (Smart IMS) Application Soft



*add new tech to your business!*

## Areas of application

**Electrical Energy Metering**

**Demand Management**

**Gas Metering**



**Street Lighting Management**

**Water Metering**

**Heat Metering**



## System Advantages

### Scalability, Flexibility, Openness and Cost Efficiency

ADDAX IMS is a **scalable** system that can be easily extended in accordance with customer's requirements. System's size can range from a separate building to a multi-million city.

ADDAX IMS is a **flexible** system that can be easily adjusted, both structurally and functionally, to particular application conditions.

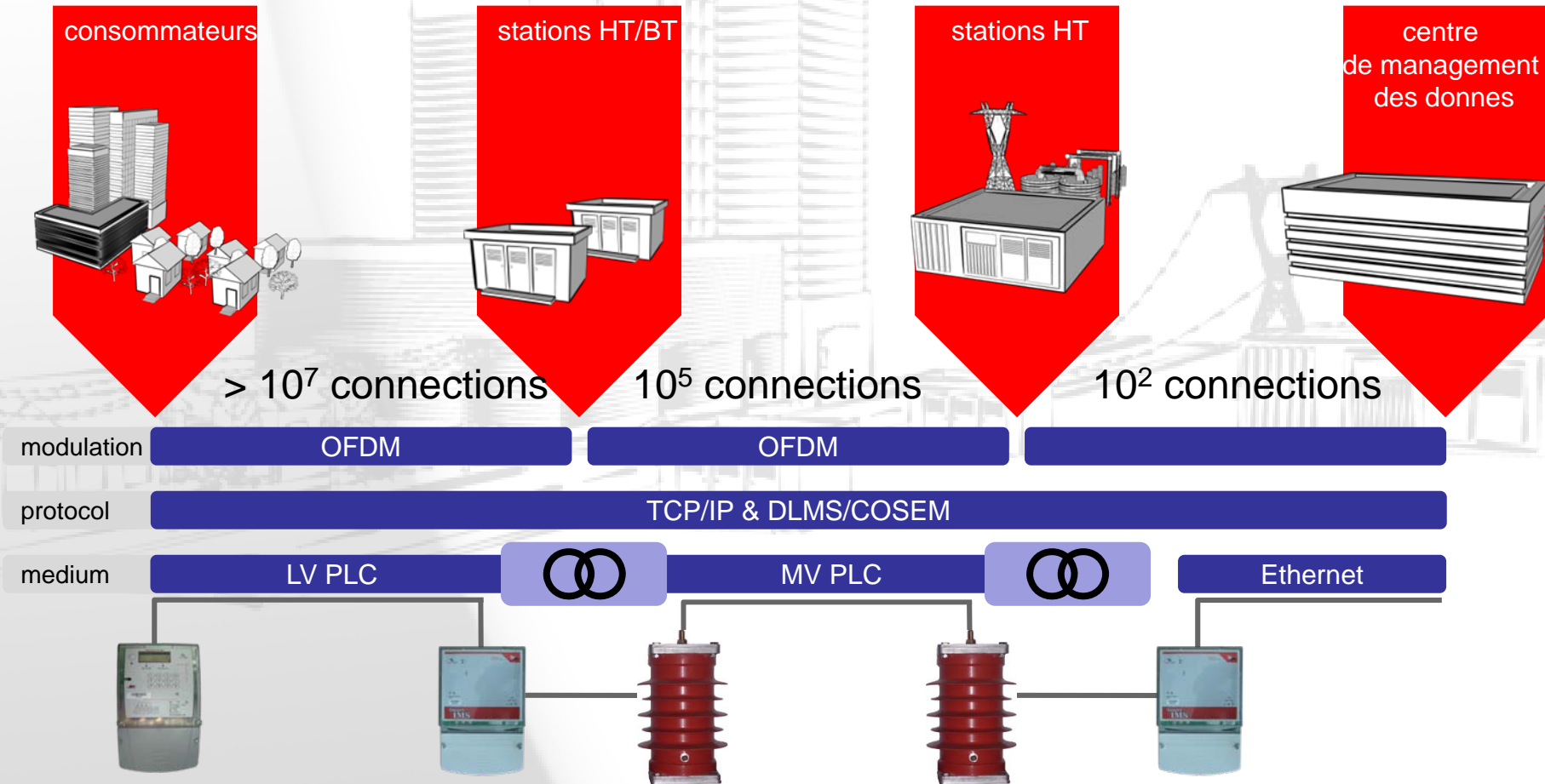
ADDAX IMS is an **open** system, compatible with other systems, for example, billing system, supporting standard protocols and generally accepted data formats.

ADDAX IMS is a **cost efficient** system, due to reliable data communication via MV-lines.



add new tech to your

# ADD GRUP's new solution OFDM + TCP/IP



*add new tech to your business!*

## Example: AMM Pilot Project in Estonia

*Launched on the networks of:*  
VKG Elektrivõrgud, Narva, Estonia



*Number of metering points installed at the moment:*  
5,000

*Communication channels:*  
LV Lines, MV Lines, Ethernet

**(no costs for the communication channels!)**

*For more information on the project contact:*

VKG Elektrivõrgud OÜ  
Kerese 11 Narva 20309 Estonia

Telephone:

+372 716 6601

Fax:

+372 716 6600

E-mail:

[vkgev@vkg.ee](mailto:vkgev@vkg.ee)



*add new tech to your business!*

## Contact Us

ADD GRUP

36, Dragomirna str.,

MD-2008, Chisinau,

Republic of Moldova

Tel./Fax: +373 22 582948

GSM: +373 69 872077

e-mail: [info@addgrup.com](mailto:info@addgrup.com)

URL: <http://www.addgrup.com>



*add new tech to your business!*

*Thank you!*

